

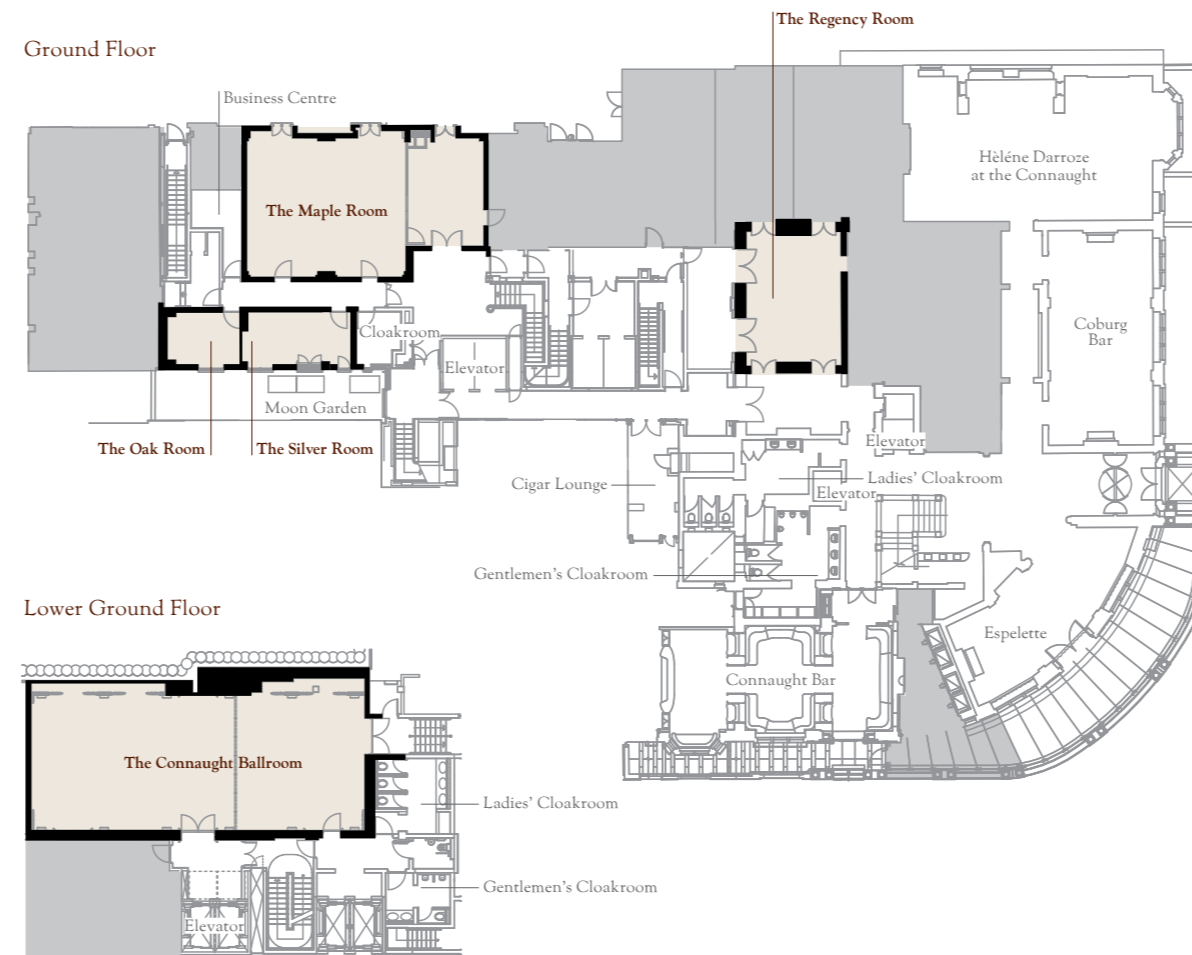


Private entertaining at the Connaught gets even better



The Connaught Ballroom

| | Dimensions m | Dimensions ft | Total Area m ² | Total Area ft ² | Theatre | Classroom | Boardroom Oval | U-shape | Cabaret | Dinner | Dinner Dance | Cocktails | Floor Level | Natural Lighting |
|------------------------|--------------|---------------|---------------------------|----------------------------|---------|-----------|----------------|---------|---------|--------|--------------|-----------|--------------|------------------|
| The Connaught Ballroom | 18 x 8 | 59 x 26 | 151 | 1625 | 130 | 70 | 60 | 50 | 70 | 120 | 80 | 200 | Lower Ground | No |
| Ballroom 1 | 8 x 11 | 26 x 36 | 88 | 947 | 70 | 40 | 40 | 30 | 49 | 70 | N/A | 120 | Lower Ground | No |
| Ballroom 2 | 9 x 7 | 30 x 23 | 63 | 678 | 30 | 20 | 24 | 14 | 28 | 50 | N/A | 60 | Ground | Yes |
| The Maple Room | 13.5 x 6 | 44 x 20 | 99 | 1065 | 50 | 32 | 30 | 20 | 42 | 60 | N/A | 80 | Ground | Yes |
| Maple Room 1 | 9 x 8 | 30 x 26 | 72 | 775 | 40 | 28 | 20 | 20 | 28 | 40 | N/A | 60 | Ground | Yes |
| Maple Room 2 | 4.5 x 6 | 15 x 20 | 27 | 290 | N/A | N/A | N/A | N/A | N/A | N/A | N/A | 30 | | |
| The Silver Room | 3 x 6 | 10 x 20 | 18 | 194 | N/A | N/A | 12 | N/A | N/A | 12 | N/A | N/A | Ground | Yes |
| The Oak Room | 4 x 3 | 13 x 10 | 12 | 129 | N/A | N/A | 6 | N/A | N/A | 6 | N/A | 12 | Ground | Yes |
| The Georgian Room | 6 x 4 | 19 x 13 | 24 | 247 | N/A | N/A | 12 | N/A | N/A | N/A | N/A | N/A | First | Yes |
| The Regency Room | 8 x 5 | 26 x 17 | 40 | 442 | 20 | N/A | 24 | N/A | N/A | 30 | N/A | 40 | Ground | No |



The Connaught Carlos Place Mayfair London W1K 2AL
 Telephone +44 (0) 20 7314 3430 Facsimile +44 (0) 20 7495 3262
 Email info@the-connaught.co.uk Website the-connaught.co.uk




CONNAUGHT
 Private events



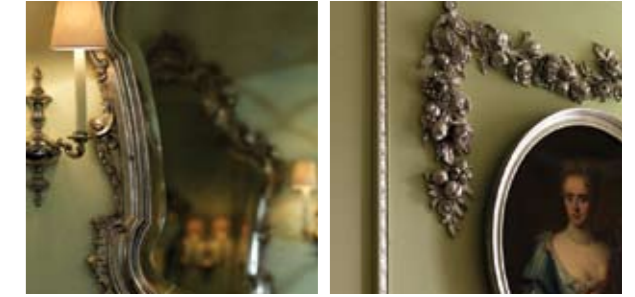
The Regency Room



The Oak Room



The Silver Room



A sumptuous new ballroom and two more intimate meeting and dining spaces

The Connaught has long been one of London's most exclusive venues in which to entertain. Now, in addition to the Georgian and Regency Rooms, a sumptuous ballroom and two more intimate meeting and dining spaces have been added. This means that the hotel will now cater with style for any size of event between six and 200 guests, enjoying cuisine prepared under the watchful eye of cuisinière Hélène Darroze and service by the expert Connaught team.

This extremely flexible new space is approached via a courtyard garden designed by six times Chelsea gold medallist Tom Stuart-Smith. The look is thirties but with a most contemporary twist. The Maple Room accommodates up to 120 guests. It also divides to provide a smaller gathering space and a meeting or presentation room for up to 42 people or alternatively a dining room with reception for up to 60 guests. The windows provide tranquil views over the neighbouring mews.

The Connaught Ballroom is entered through impressive silver and bronze double doors. Its walls are hung with silver satinised silk. Here up to 120 guests can be seated for lunch or dinner and a state-of-the-art sound and lighting system and sprung parquet dance floor make the space an excellent choice for gala dinners, presentations, private screenings, and exclusive catwalk shows. It may also be divided into two.

The two smaller Oak and Silver Rooms accommodate up to six and 12 guests respectively, perfect for board meetings and discreet dining. Lined with silvered oak panelling, their decorative windows overlook the courtyard garden. 36 new rooms and suites will be available to support the hotel's expanded private events facilities. These are a more contemporary take on the first wave of new rooms at the Connaught, eclectic, residential in feel, sporting marble lined spa bathrooms with freestanding baths, spacious showers, Dornbracht taps and Japanese Totolooos.

Cutting-edge modern art adorns the walls, whilst full height windows which open allow light to flood in through electrically operated, hand embroidered curtains. The exquisitely comfortable beds are ingeniously underlit giving the impression of floating on air. Guests will also have the use of the world class Aman Spa, complete with swimming-pool, gym and luxuriously appointed treatment rooms.



The Connaught Ballroom